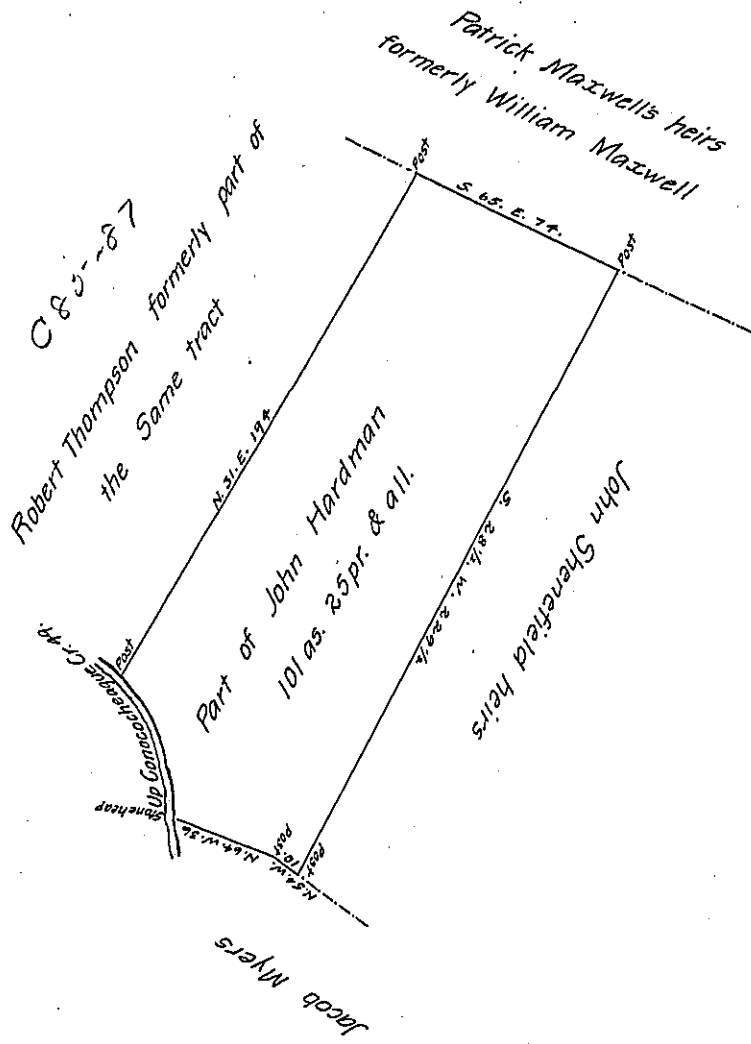


Courses on the Creek  
 By a Stoneheap N. 13. W. 36  
 N. 42. W. 13  
 49 pr



A Draught of a Tract of Land Situate in Montgomery Township Franklin County Containing One hundred and one acres and twenty five perches and the usual Allowance of Six p Cent for roads &c being part of a larger Tract of Two hundred and forty acres and Allowance &c which was formerly Surveyed in pursuance of a Warrant granted John Haraman Dated February 18th 1744 Resurveyed and laid off from the other part of said tract Decbr. 17th 1811.

To Andrew Porter Esqr

Thomas Poc D. S.

Surveyor General of Penna.

IN TESTIMONY that the above is a copy of the original remaining on file in the Department of Internal Affairs of Pennsylvania, made conformably to an Act of Assembly approved the 16th day of February, 1833, I have hereunto set my Hand and caused the Seal of said Department to be affixed at Harrisburg, this

fourth day of January 1906

*Geo. C. R. Brown*  
 Secretary of Internal Affairs